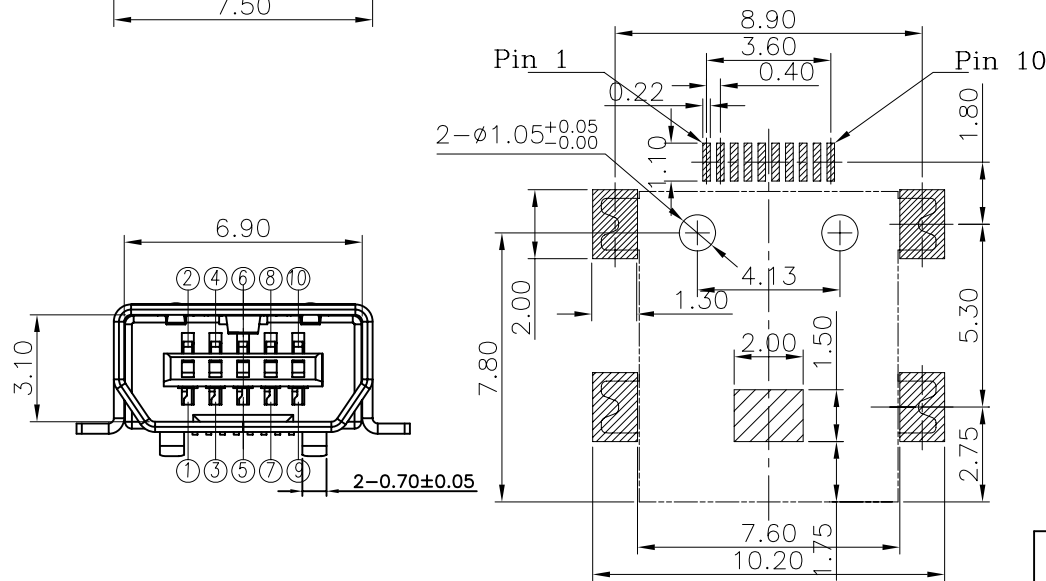
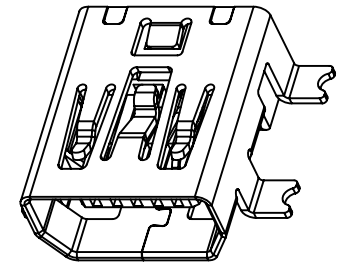
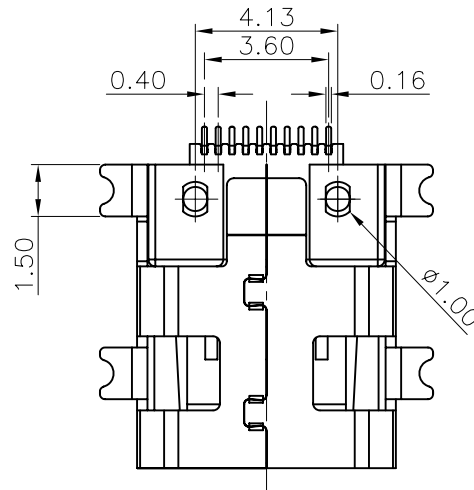
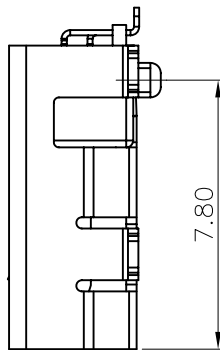
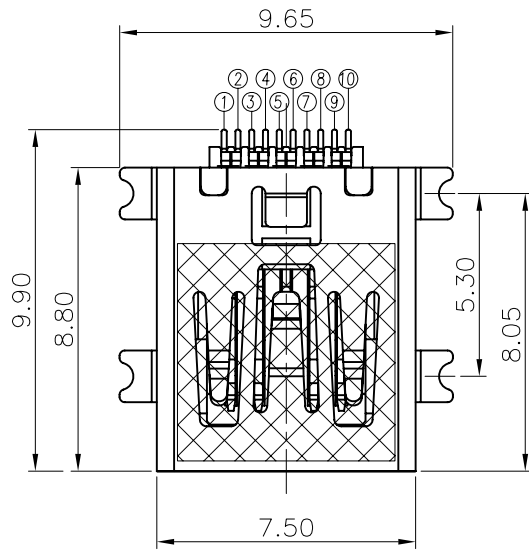


REV.	ECN NO.	LOCAS.	DESCRIPTION	DATE	DESIGN
A0			INITIAL RELEASE		



Recommended PCB Layout(T=0.8)

NOTES:

- MATERIAL:  
INSULATOR: HI-Temp Plastic UL 94V-0 Rated.  
CONTACT: Copper Alloy(t=0.15mm).  
SHELL: Copper Alloy OR STAINLESS STEEL (t=0.30mm).
- ELECTRICAL CHARACTERISTICS:  
CONTACT CURRENT RATING: 0.5 AMPERES.  
DIELECTRIC WITHSTANDING VOLTAGE: AC100V R.M.S.  
INSULATION RESISTANCE: 100 MΩ MINIMUM.  
CONTACT RESISTANCE: 50 MΩ MAXIMUM.
- ENVIRONMENTAL:  
OPERATING TEMPERATURE: -25°C~+65°C.
- ENVIRONMENTAL:  
MATING CYCLES: 5,000 INSERTIONS.

深圳市鑫南天科技有限公司  
Shenzhen XinNanTian Industrial Co.,Ltd

DRAW NO.	DATE	MATERIAL: SEE NOTES	MINI USB 10P AB型母座 (Philips 全贴有柱 镀金短锡脚) UNIT: mm 1/1
DESIGN: shi shu bo	12/02/16	FINISH: SEE NOTES	
CHECK:		P/N NO. MUB-AF010-107	
APPROVED		REV. A0 SCALE N/A	

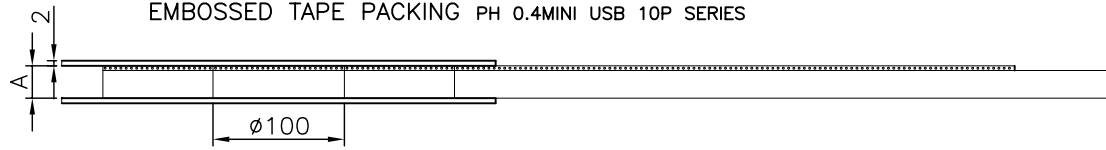
DIM	TOL	DIM	TOL
X.	±0.50	X*	±5.0°
X.X	±0.35	X.X*	±4.0°
X.XX	±0.25	X.XX*	±3.0°
X.XXX	±0.15	X.XXX*	±2.0°

REV.	ECN NO.	LOCAS.	DESCRIPTION	DATE	DESIGN
A0			INITIAL RELEASE		

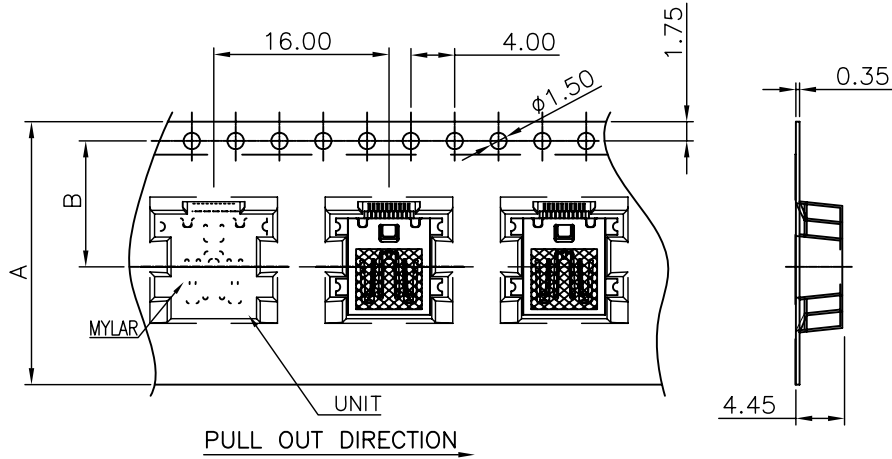
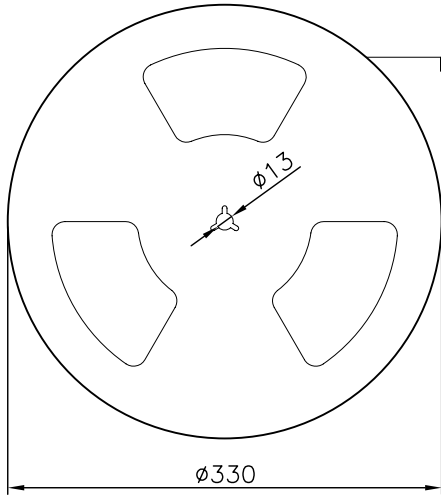
EMBOSSED TAPE PACKING PH 0.4MINI USB 10P SERIES

NOTES:

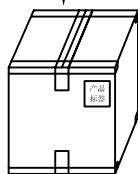
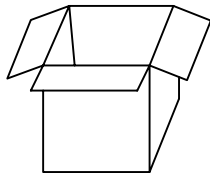
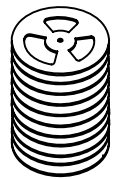
- 10 SPROCKET HOLE PITCH CUMULATIVE TOLERANCE±0.2.
- CARRIER CAMBER IS WITHIN 1 MM IN 250MM.
- MATERIAL: CLARITY CONDUCTIVE POLYSTYRENE ALLOY 100% RECYCLABLE.
- ALL DIMENSIONS MEET EIA-481-3 REQUIREMENTS.
- THICKNESS: 0.35±0.05MM
- COMPONENT LOAD PER 13" REEL: 800PCS.
- FOR TAPE WIDTH(DIMENSION A) 24MM A PILOT HOLE IS PROVIDED ON ONE SIDE.



PULL OUT DIRECTION



PULL OUT DIRECTION



CARTON PACKING

No. of Contacts	Part Number	DIM. A Note7	DIM. B	DIM. C
10P	—	24	11.50	—

深圳市鑫南天科技有限公司  
Shenzhen XinNanTian Industrial Co.,Ltd

DRAW NO.	DATE	MATERIAL: SEE NOTES	MINI USB 10P AB型母座 - PACKING UNIT: mm 1/1
DESIGN: shi shu bo	11/03/08	FINISH: SEE NOTES	
CHECK:		P/N NO. MUB-AF010-XXX	
APPROVED		REV. A0 SCALE N/A	

DIM	TOL	DIM	TOL
X.	±0.50	X*	±5.0°
X.X	±0.35	X.X*	±3.0°
X.XX	±0.25	X.XX*	±2.0°
X.XXX	±0.15	X.XXX*	±1.0°